

Energy –Environmental Inter-Model Comparison Exercises: Past, Present and Future

John P. Weyant
Director of the Energy Modeling Forum and
Professor of Management Science and Engineering
Stanford University
Stanford, California

ALPS International Symposium 2012
"Addressing Climate Change Harmonized with Sustainable Development"
February 7th, 2012
Nadao Hall
Shin-Kasumigaseki Building
Tokyo, Japan

Outline

- Introduction
- EMF objectives, design principles & studies
- Lessons learned from past model inter-comparison studies
 - Things that worked well
 - Things that could be improved
 - Current trends in inter-model comparisons
- Suggestions for the future of model comparisons, diagnostics and assessment

Energy Modeling Forum Objectives

- Understand model differences
- Understand strengths and weaknesses of existing models/methodologies
- Identify useful information and insights for corporate planning and government policy making
- Identify high priority areas for development of new data, analyses, and modeling methodologies

EMF Design Principles

- Broad participation
- Focus on model comparisons
- Policy relevance
- Decentralized analysis
- Wide dissemination of results

EMF Studies

- EMF 0: CONAES Modeling Group
- EMF 1: Energy and the Economy
- EMF 2: Coal in Transition
- EMF 3: Electric Load Forecasting
- EMF 4: Elasticity of Energy Demand
- EMF 5: U.S. Oil and Gas Supply
- EMF 6: World Oil
- EMF 7: Macroecon. Impacts of Energy Shocks
- EMF 8: Industrial energy Demand
- EMF 9: North American Natural Gas
- EMF 10: Electric Markets and Planning
- EMF 12: Carbon Emission Reductions
- EMF 11: International Oil
- EMF 13: Markets for Energy Efficiency
- EMF 14: Integrated Assessment of Climate Change
- EMF 15: Markets for Power

EMF Studies (Continued)

EMF 16: IA of Climate Change: Post-Kyoto

EMF 17: Prices/Emissions in Restructured Elec. Mkts.

EMF 18: Trade Dimensions of Climate Policy

EMF 19: Technology and Climate Policies

EMF 20: North American Natural Gas

EMF 21: Multi-Gas Greenhouse Gas Mitigation

EMF 22: GHG Gas Transition Scenarios

EMF 23: World Natural Gas Markets & Trade

EMF 24: US Technology Strategies for GHG Mitigation

EMF 25: US Energy Efficiency Potentials

EMF 26: Energy System Impacts of Shale Gas

EMF 27: Global Tech. Strategies for GHG Mitigation

EMF 28: EU Technology Strategies for GHG Mitigation

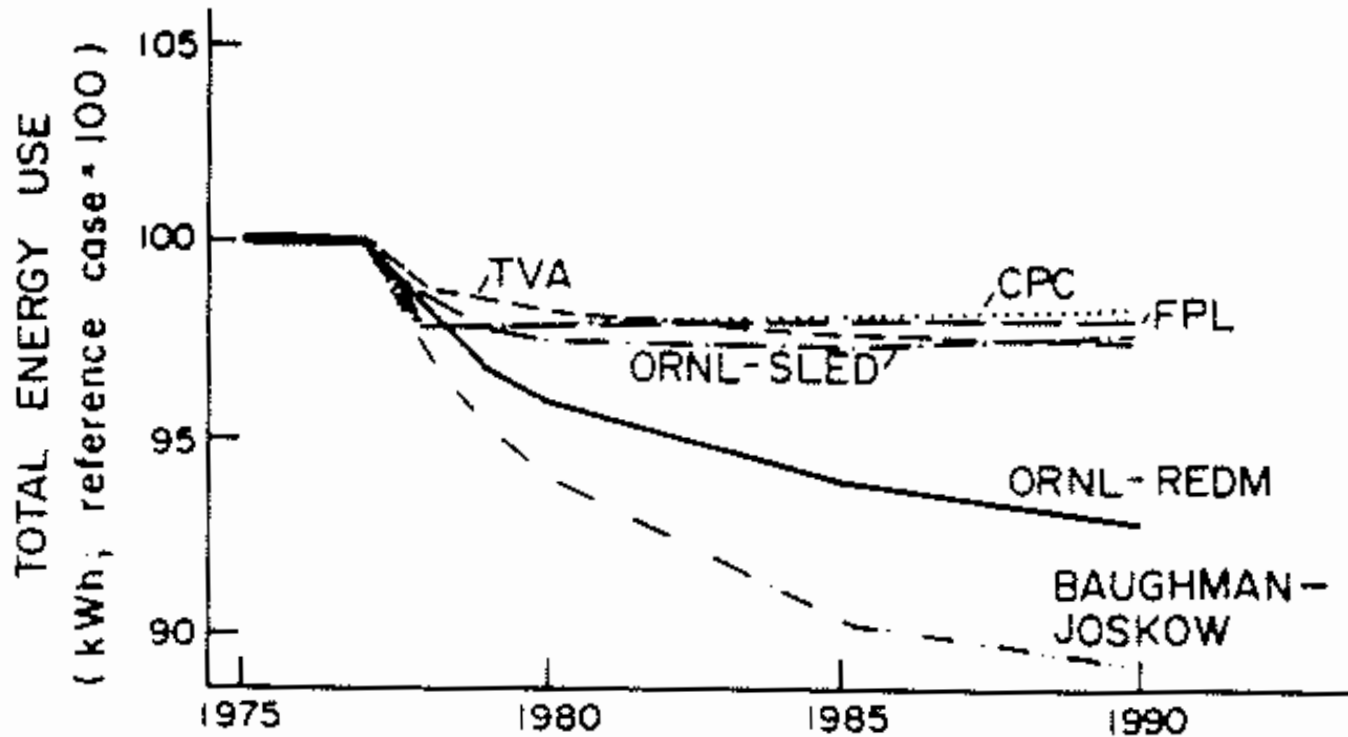
EMF 29?: International Trade & GHG Mitigation

Lessons Learned From Past Inter-Model Comparison Studies; Things That Worked Well

- Timing is everything; address issues that are important and for which enough different models exist.
- Insights, not numbers .
 - Insights about markets.
 - Insights about policies.
 - Insights about model comparisons.
 - Insights about the adequacy of current methods.
- Tension between diagnostics and policy analysis.
- Importance of study groups.
- Forecasting in perspective.

Market Insight #1

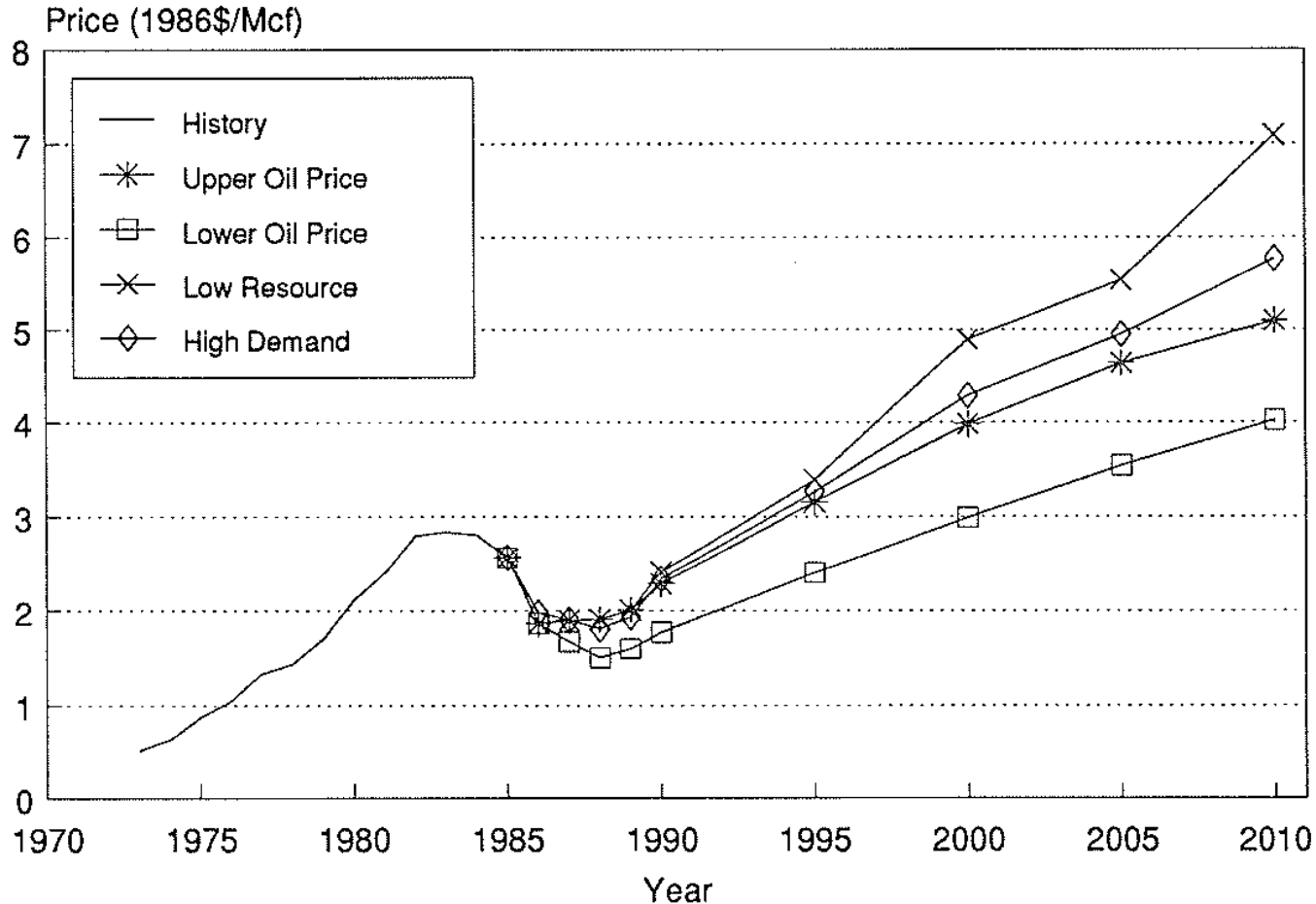
Change in electricity consumption projections with 10% price increase relative to the reference case. Source: EMF 3



Market Insight #2

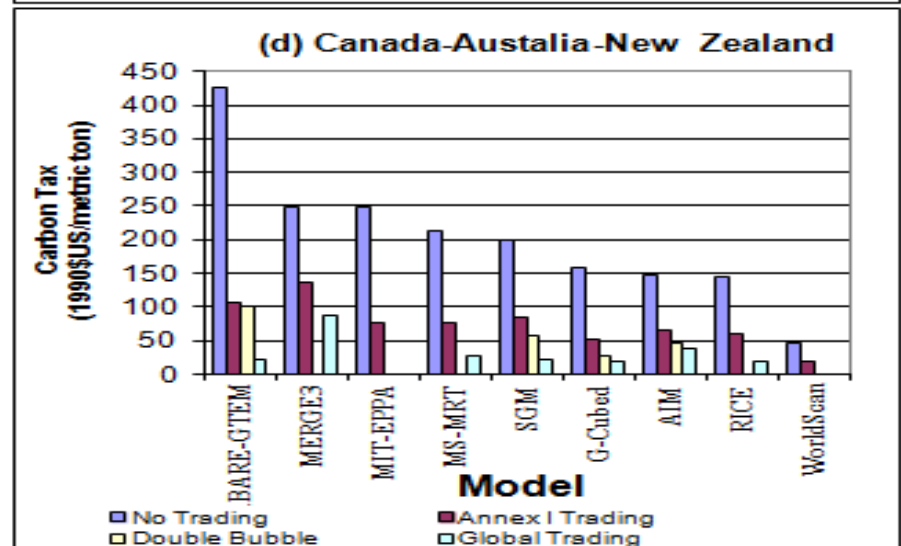
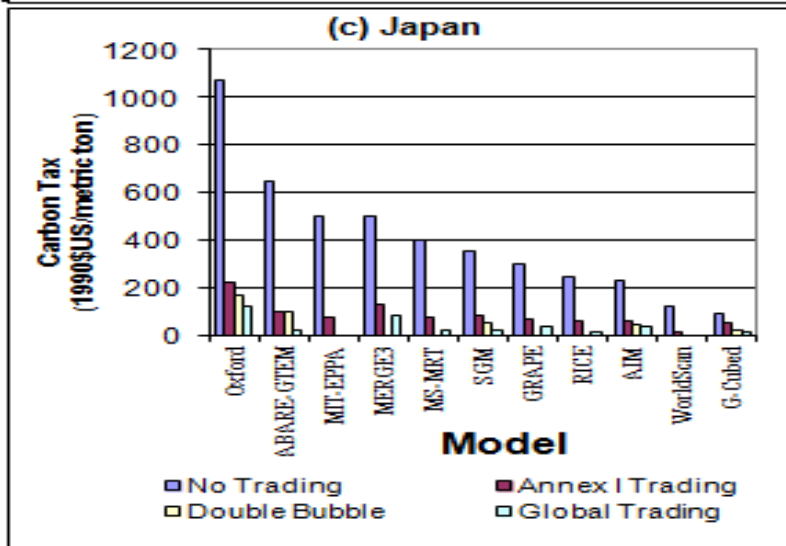
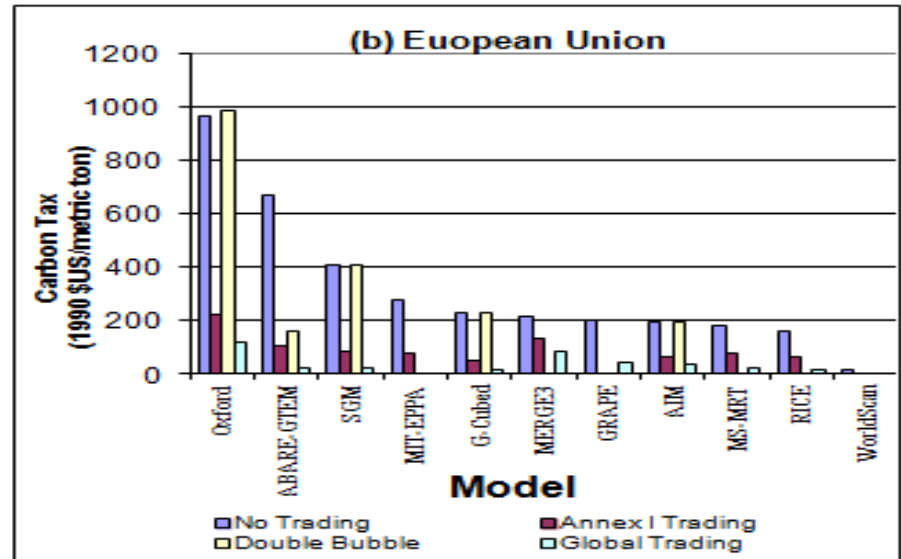
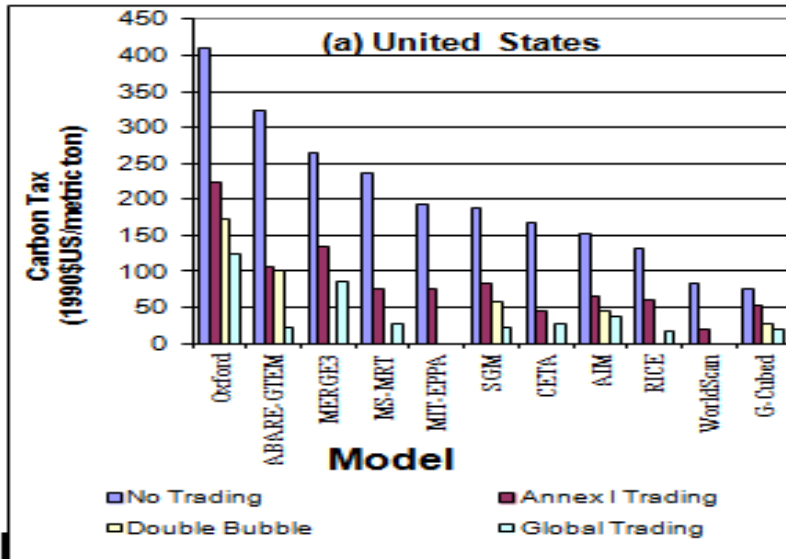
Model Means for Average U.S. Wellhead Price

Source: EMF 9



Policy Insight #1

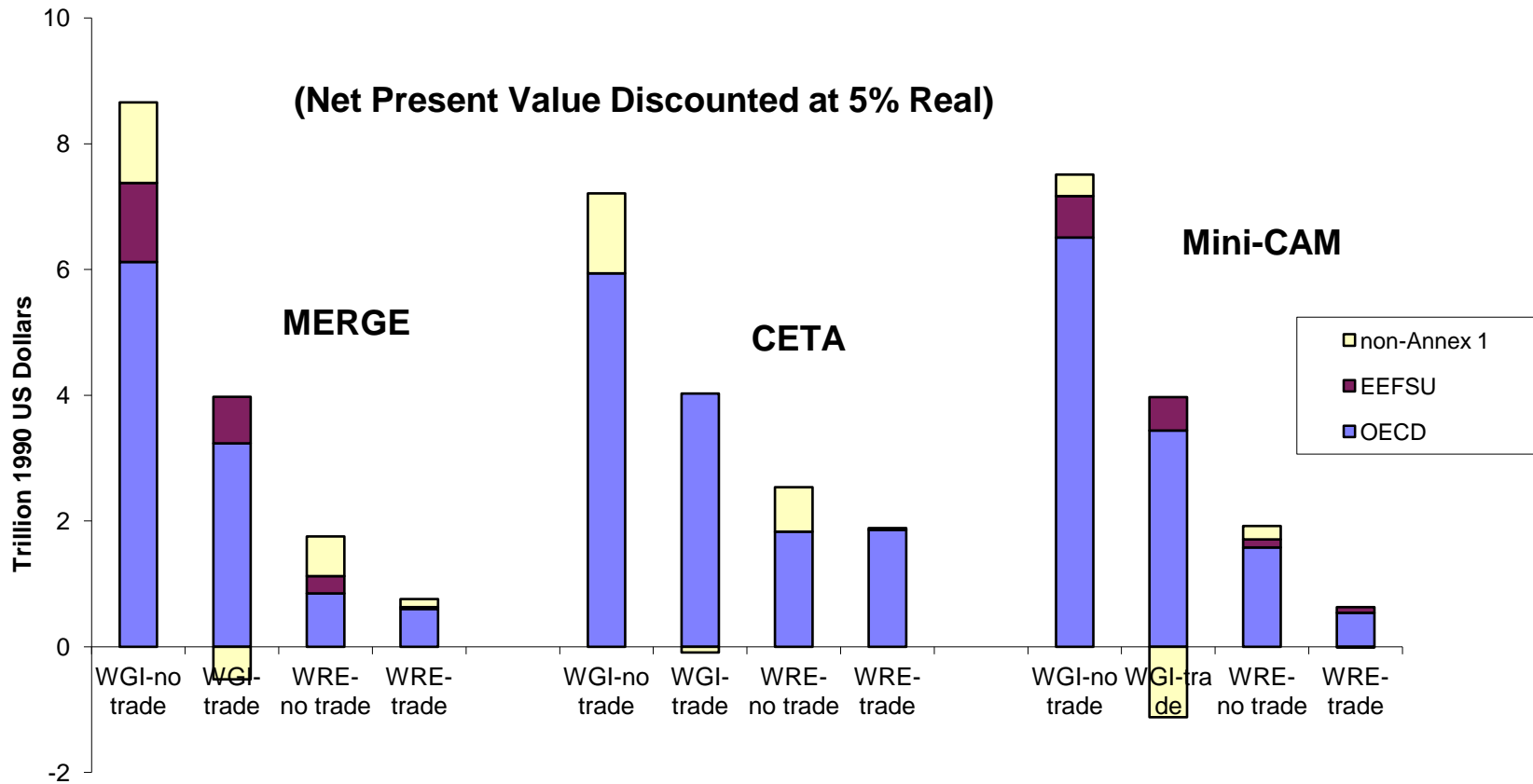
Projected 2010 Carbon Tax Under the Kyoto Protocol Commitments and Various Emissions Trading Assumptions



Policy Insight #2

Where & When Flexibility in Stabilizing CO₂ Concentrations at 550 ppmv

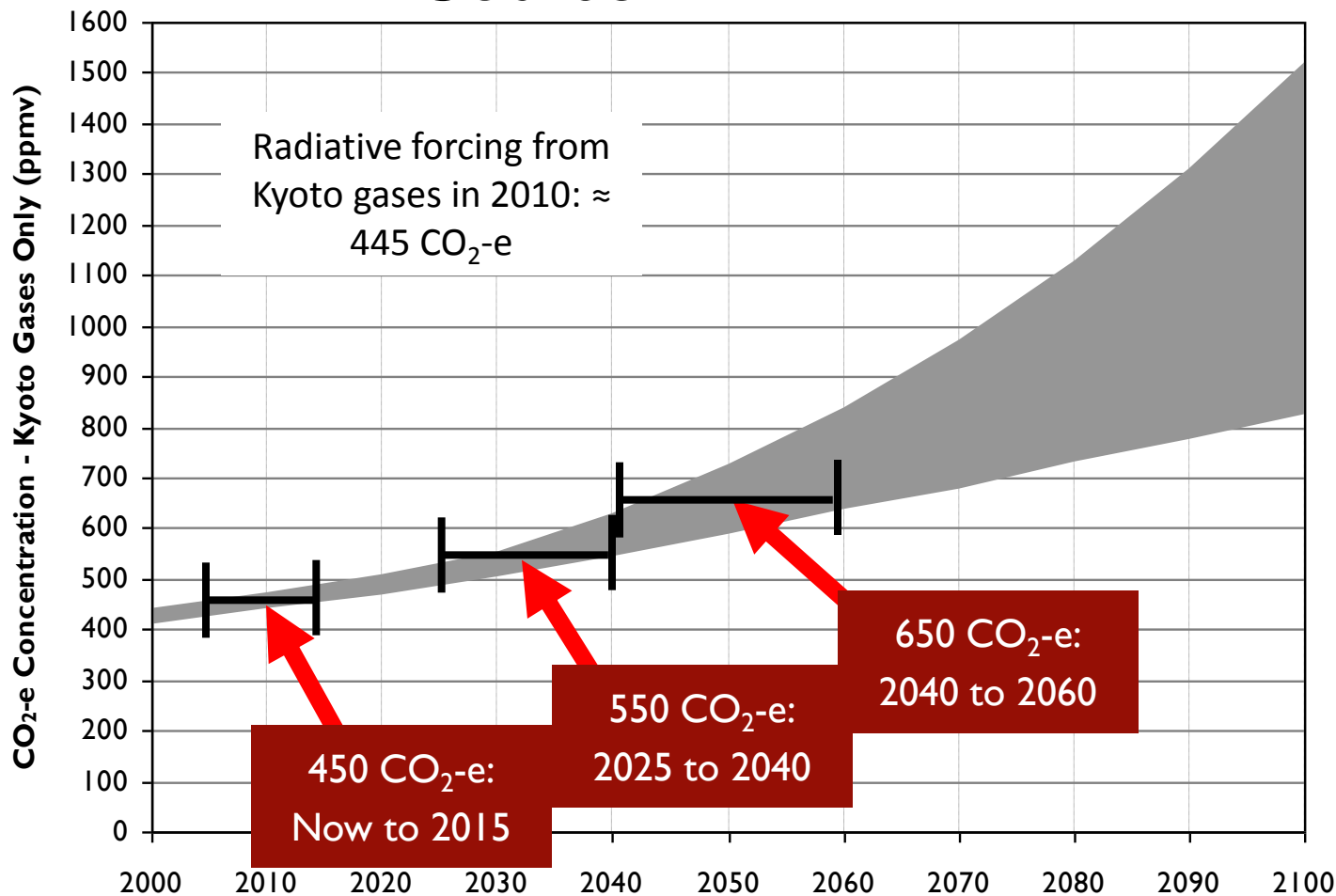
Source: UNFCC-EMF Oslo Workshop (August 1997)



Policy Insight #3

Without mitigation, CO₂-e concentrations will quickly pass the three long-term goals.

Source: EMF 22

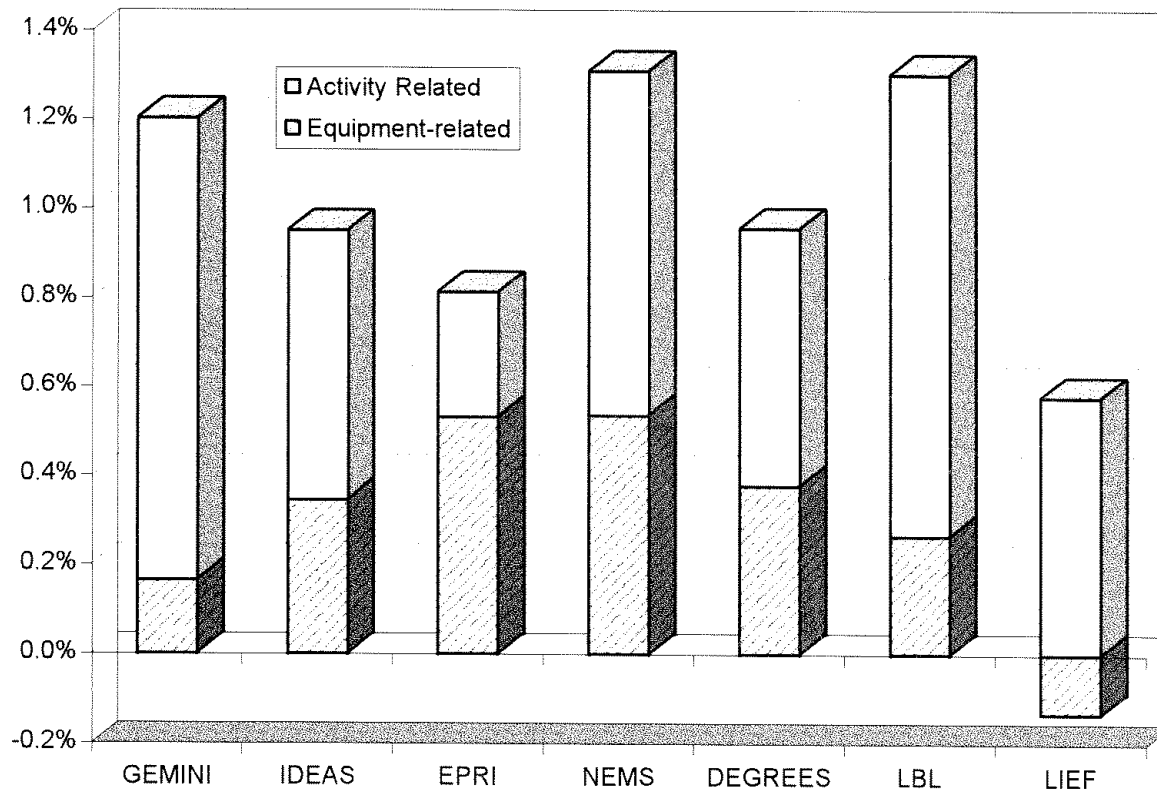


Note: CO₂e Now Growing at 3.5 to 4.5 ppmv per year

Policy Insight # 4

Relative Importance of New Equipment Efficiency Improvements in the Total Decline in U.S. Energy Intensity, 1990-2010. Source: EMF 13

% ch p.a.

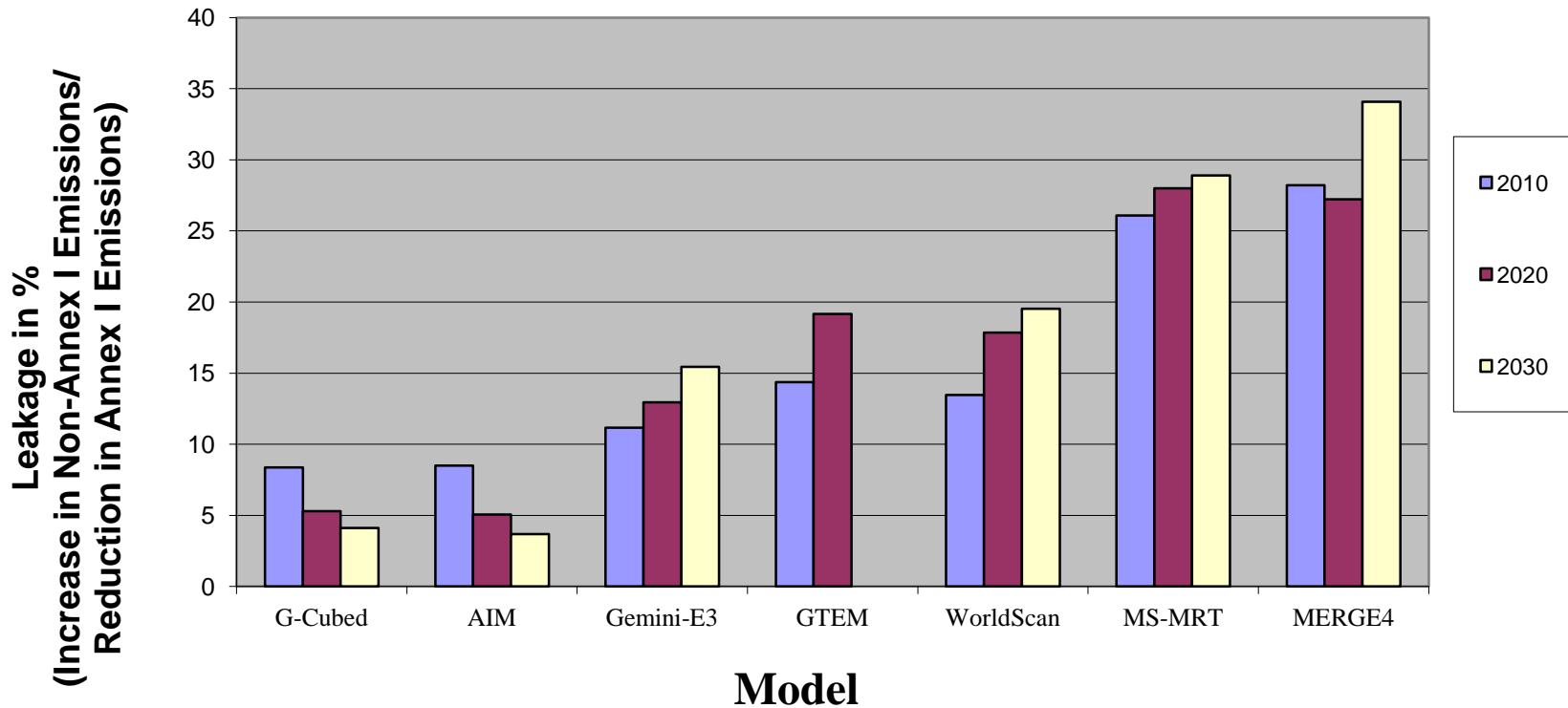


*negative effect due to increased electrification

Policy Insight # 5

Annex I Leakage in the No Emissions Trading Case With Respect to the Reference

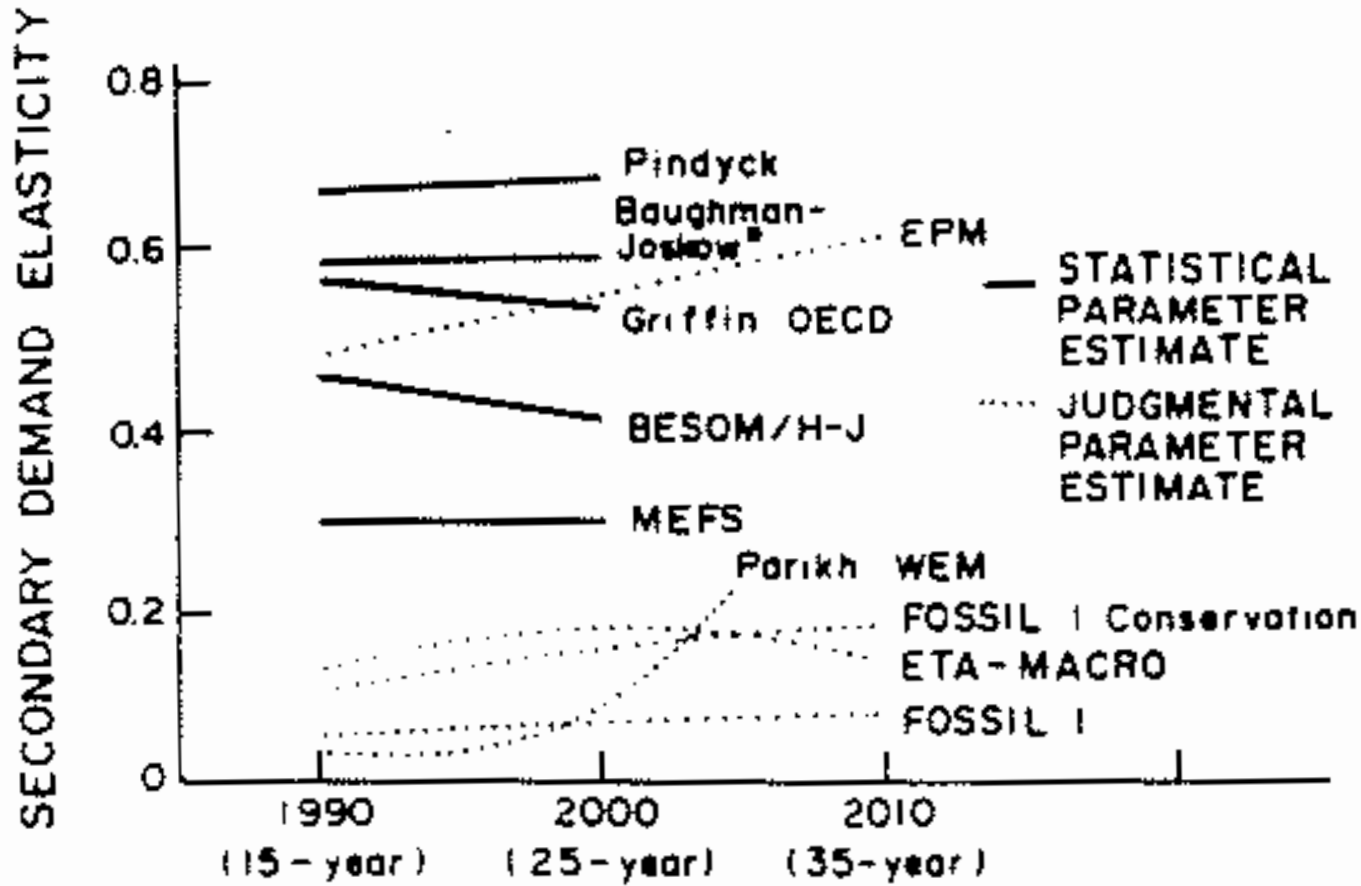
Source: EMF 18



Inter-Model Comparison Insight #1

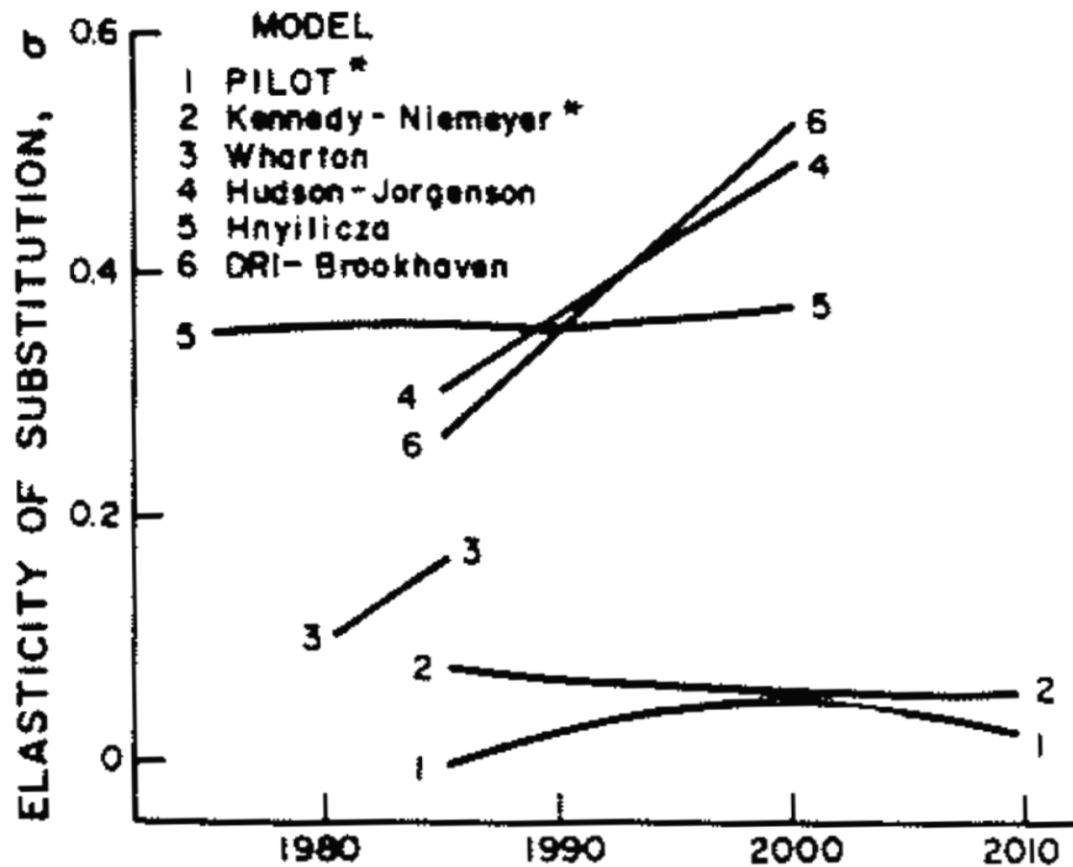
Aggregate total demand elasticity estimates.

Source: EMF 4



Inter-Model Comparison Insight #2

Aggregate elasticity of substitution calculated using the outputs for the base case and the base case with constraints. Source: EMF 1



Models Need Improvement Insight #1

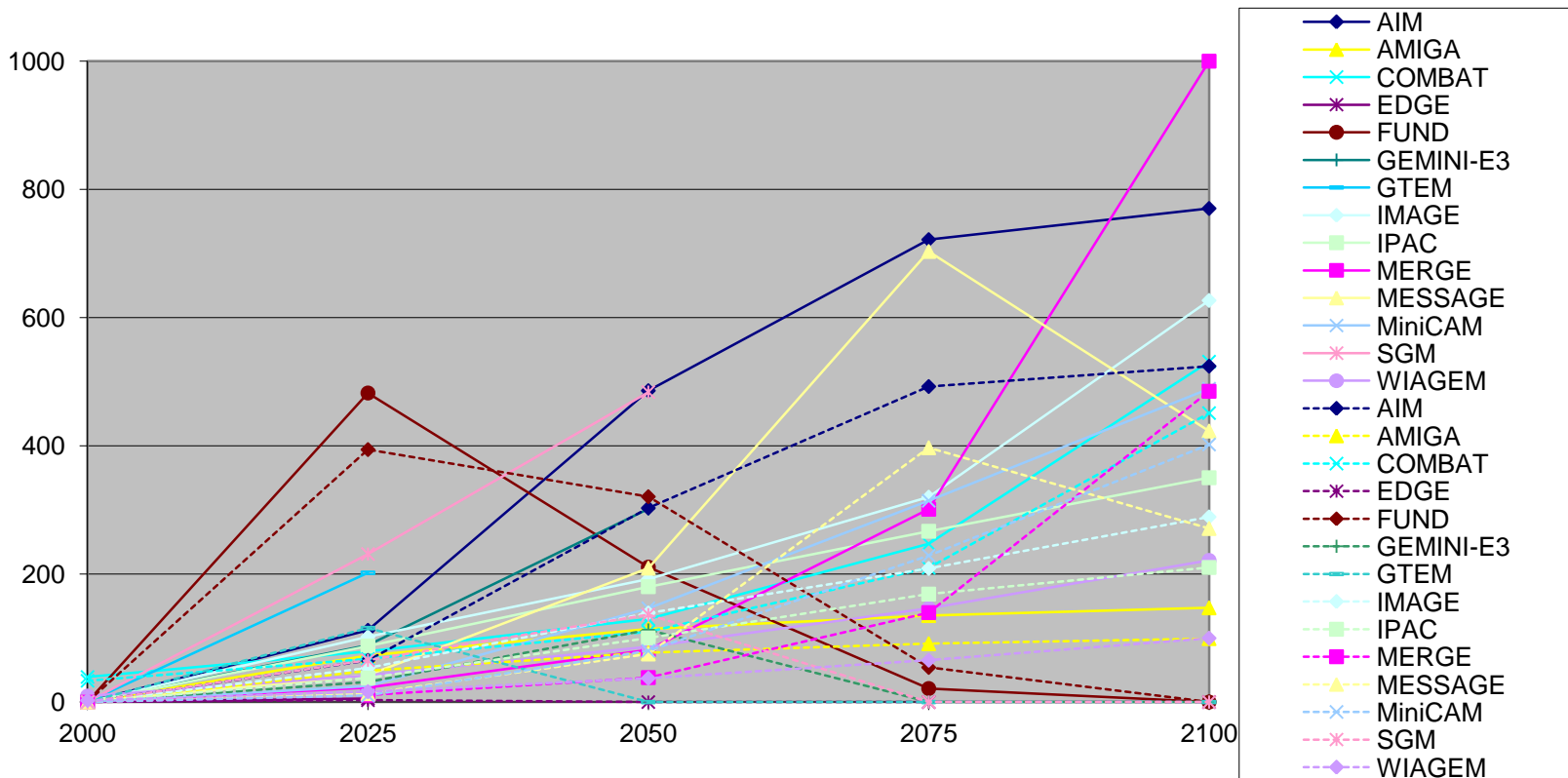
Distributed Generation and T&D Constraints

- EMF 10: Electric Markets and Planning
 - IPP grid integration
- EMF 15: Markets for Power
 - More competitive electricity markets
- EMF 17: Prices/Emissions in Restructured Elec. Mkts.
 - Env. Impacts of competitive electricity markets
- EMF 24: US Technology Strategies for GHG Mitigation?
 - Grid integration of renewables

Models Need Improvement Insight #2

Carbon Permit Price (2000\$USD/tC) in CO2-Only (solid) and Multigas (dashed) Scenarios

Source: EMF 21



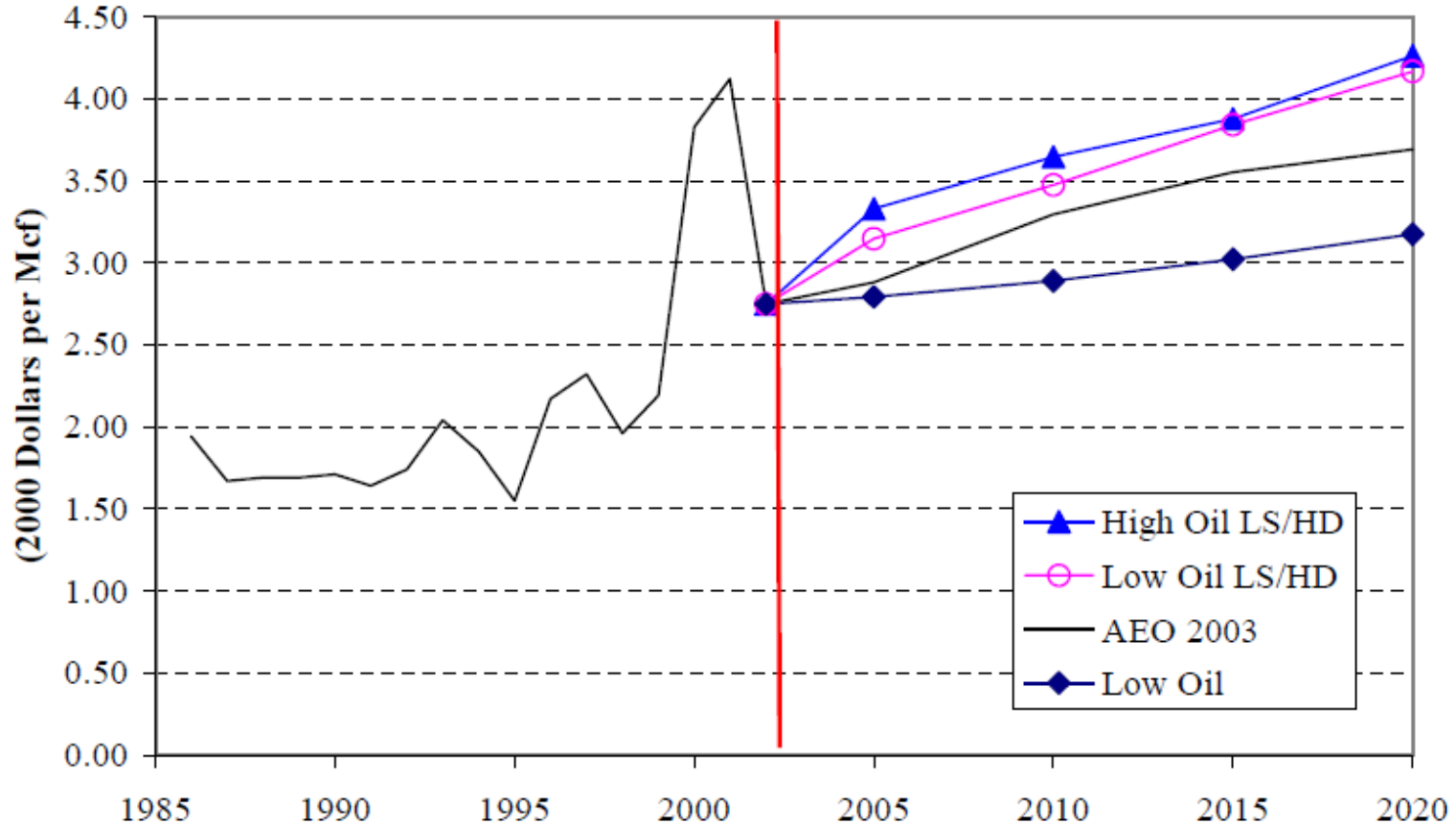
Lessons Learned From Past Inter-Model Comparison Studies; Things That Could Be Improved

- Consider a broader range of uncertainties.
- Do more diagnostics.
- Better communication of results vis a vis what's out there.
- Better communication of results to potential users.
- More thought/work on forecasting accuracy.

Could Have Done Better #2

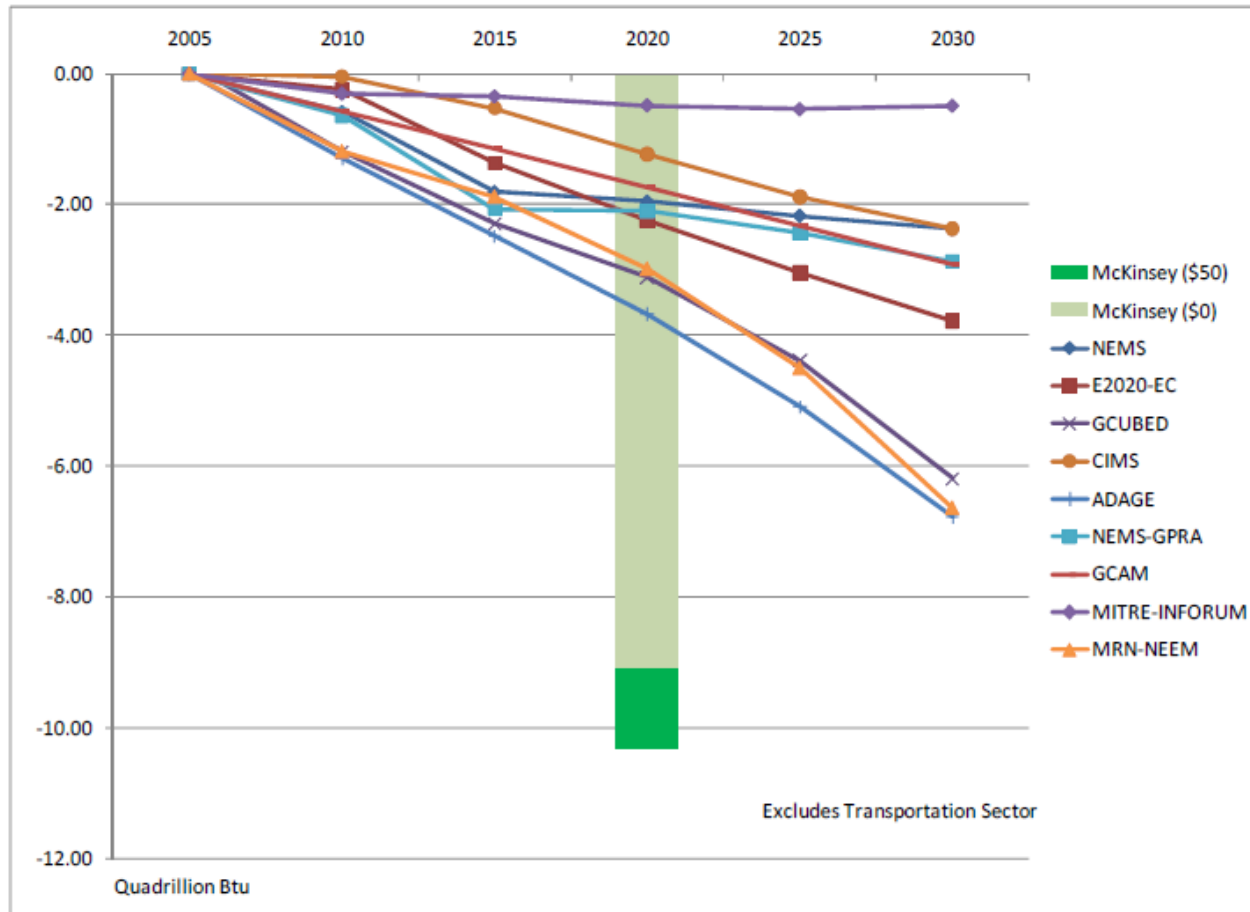
Average Wellhead Natural Gas Prices Across Models

Source: EMF 20



Could Have Done Better #3

Energy Demand Reductions Achievable for Similar Carbon Prices
Carbon Prices Source: EMF 25



Current Trends in Inter-Model Comparisons

- With IT improvements, can do more.
- More people, modeling centers, global collaborations: e.g., IAMC.
- Implementation modeling.
- “Forecasting”.
- More openness and better communication.

Suggestions for the Future of Model Comparisons, Diagnostics and Assessment

- Better accounting for uncertainty
- Better integration of assessment, model inter-comparisons and validation
- More implementation modeling and policy relevant metrics
- Better communication of all, especially the above to decision makers
- Tie high priority directions for future research directly into assessments-VOI, etc.

Thank You